

# **Heber Light & Power**

## **Rate Design**

**3/13/2025**

**Utility Financial Solutions, LLC**  
**185 Sun Meadow Court**  
**Holland, MI 49424**  
**616 393 9722**

**Email: [jjurczyk@ufsweb.com](mailto:jjurczyk@ufsweb.com)**

Submitted Respectfully by:  
Jill Jurczyk  
Rates Manager, Utility Financial Solutions, LLC



**Heber Light & Power**  
**Rate Design**  
*Table of Contents*

	Page	Overview of Structural Changes
Rate Design Summary	3	
Residential Rate Progression	4	Phasing in a demand charge and time-based energy
Residential Single Phase - TOU Opt Out Rate	5	Opt-out rate for Residential
Existing Residential TOU	6	Phasing in a demand charge
GS NEM TOU	5	Phasing in time-based energy charges
Yard Lighting	6	No structural change
Residential Service Pumping	7	Align with the residential rate
Small General Service Pumping	8	Phasing in time-based energy charges
Medium General Service Pumping	9	Phasing in time-based energy charges
Small General Service	10	Merging block rate to single energy charge
Medium General Service	11	No structural change
LGS with TOU	12	Phasing in time-based energy charges

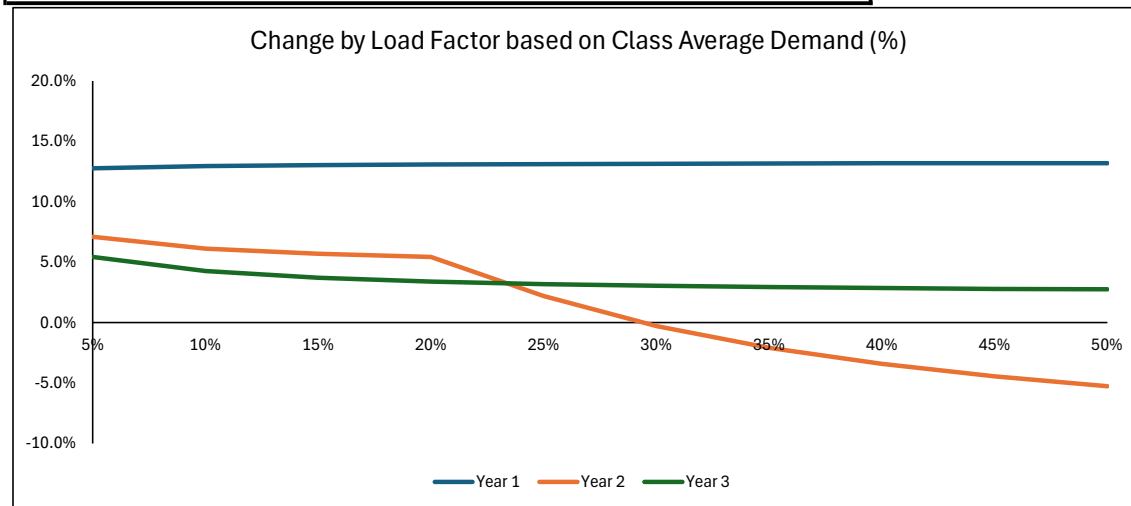
**Heber Light & Power**  
**Rate Design**  
*Rate Design Summary*

Customer Class	Projected Percentage Change Year 1	Projected Percentage Change Year 2	Projected Percentage Change Year 3
Residential	13.1%	3.5%	3.5%
Residential TOU	13.1%	3.5%	3.5%
Residential Pumping	-8.8%	0.8%	3.1%
Small General Service	12.0%	3.0%	3.0%
Small General Service Pumping	13.1%	6.1%	6.0%
Medium General Service	12.8%	3.2%	3.2%
Medium General Service Pumping	14.5%	5.0%	5.0%
Large General Service	14.0%	4.5%	4.5%
Yard Lighting	12.7%	3.8%	3.6%
Totals	13.0%	3.5%	3.5%

**Heber Light & Power**  
**Electric Rate Design**  
 Residential Rate Progression

Rates	Current	Year 1	Year 2	Year 3
<b>Monthly Facilities Charge:</b>				
Below 400 AMP	\$ 17.90	\$ 18.40	\$ 18.90	\$ 19.40
400 AMP and Greater	\$ 33.90	\$ 35.40	\$ 36.90	\$ 38.40
<b>Energy Charge:</b>				
Block 1 (0 - 1000 kWh)	\$ 0.10436	\$ 0.11820		
Block 2 (Excess)	\$ 0.12476	\$ 0.14130		
Non Summer On-Peak			\$ 0.14029	\$ 0.15652
Non Summer Off-Peak			\$ 0.12199	\$ 0.12040
Summer On-Peak			\$ 0.14029	\$ 0.15652
Summer Off-Peak			\$ 0.12199	\$ 0.12040
<b>Demand Charge:</b>				
Below 400 AMP		\$ 0.25	\$ 0.50	\$ 0.75
400 AMP and Greater		\$ 0.75	\$ 1.50	\$ 2.25
Revenue from Rate	\$ 16,347,770	\$ 18,488,632	\$ 19,134,949	\$ 19,803,862
Change from Previous		13.1%	3.5%	3.5%

Non Summer Differential	-	1.15	1.30
Summer Differential	-	1.15	1.30



Average Monthly \$ Change by Winter Load Factor (Summer Energy Multiplier =0.93)				
Monthly Energy	LF	Year 1	Year 2	Year 3
243	5%	\$ 5.52	\$ 3.46	\$ 2.83
485	10%	\$ 8.88	\$ 4.75	\$ 3.50
728	15%	\$ 12.24	\$ 6.04	\$ 4.17
971	20%	\$ 15.59	\$ 7.33	\$ 4.84
1,213	25%	\$ 19.53	\$ 3.70	\$ 5.50
1,456	30%	\$ 23.54	(0.62)	\$ 6.17
1,699	35%	\$ 27.56	(4.93)	\$ 6.84
1,941	40%	\$ 31.57	(9.25)	\$ 7.51
2,184	45%	\$ 35.58	(13.56)	\$ 8.18
2,427	50%	\$ 39.60	(17.87)	\$ 8.84

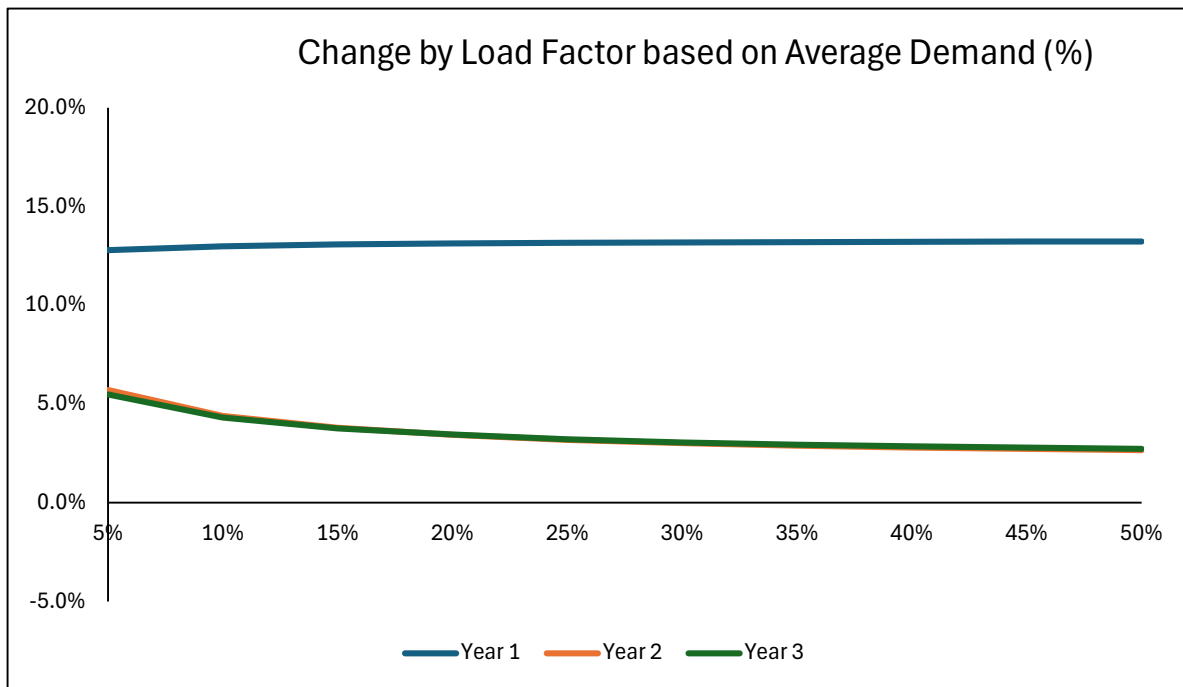
# Heber Light & Power

## Electric Rate Design

Residential Single Phase

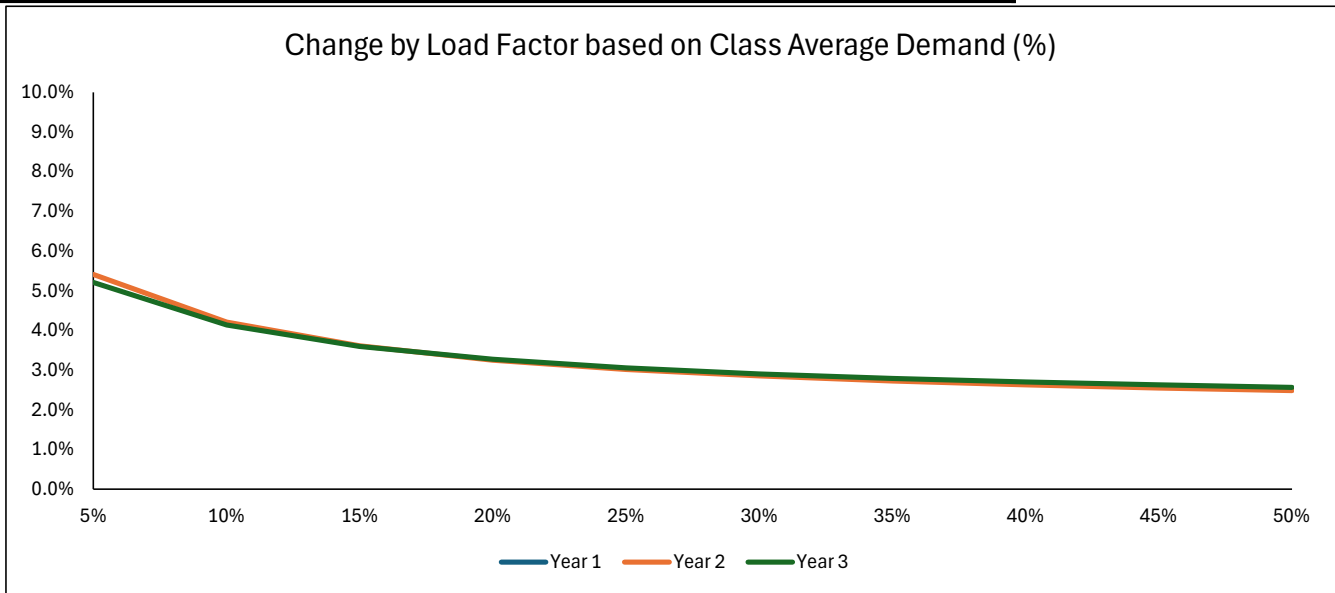
*TOU Opt Out Rate*

Rates	Current	Year 1	Year 2	Year 3
<b>Monthly Facilities Charge:</b>				
Below 400 AMP	\$ 17.90	\$ 18.40	\$ 18.90	\$ 19.40
400 AMP and Greater	\$ 33.90	\$ 35.40	\$ 36.90	\$ 38.40
<b>Energy Charge:</b>				
Block 1 (0 - 1000 kWh)	\$ 0.10436	\$ 0.11823	\$ 0.12077	\$ 0.12348
Block 2 (Excess)	\$ 0.12476	\$ 0.14134	\$ 0.14438	\$ 0.14761
<b>Demand Charge</b>				
Below 400 AMP	\$ -	\$ 0.25	\$ 0.50	\$ 0.75
400 AMP and Greater	\$ -	\$ 0.75	\$ 1.50	\$ 2.25
Revenue from Rate	\$ 16,115,838	\$ 18,227,013	\$ 18,864,958	\$ 19,525,232
Change from Previous		13.1%	3.5%	3.5%



**Heber Light & Power**  
**Electric Rate Design**  
Existing Residential TOU

Rates	Current	Year 1	Year 2	Year 3
<b>Monthly Facilities Charge:</b>				
Below 400 AMP	\$ 17.90	\$ 18.40	\$ 18.90	\$ 19.40
400 AMP and Greater	\$ 33.90	\$ 35.40	\$ 36.90	\$ 38.40
<b>Energy Charge:</b>				
Non Summer On-Peak	\$ 0.15251	\$ 0.18984	\$ 0.20625	\$ 0.22196
Non Summer Off-Peak	\$ 0.07663	\$ 0.08629	\$ 0.08250	\$ 0.07927
Summer On-Peak	\$ 0.21256	\$ 0.24207	\$ 0.26667	\$ 0.29007
Summer Off-Peak	\$ 0.10489	\$ 0.10525	\$ 0.10063	\$ 0.09669
<b>Demand Charge:</b>				
Below 400 AMP	\$ -	\$ 0.25	\$ 0.50	\$ 0.75
400 AMP and Greater	\$ -	\$ 0.75	\$ 1.50	\$ 2.25
Revenue from Rate	\$ 480,870	\$ 543,864	\$ 562,899	\$ 582,600
Change from Previous		13.1%	3.5%	3.5%
Non Summer Differential	1.99	2.20	2.50	2.80
Summer Differential	2.03	2.30	2.65	3.00



## Heber Light & Power

### Electric Rate Design

GS NEM TOU

Rates	Current	Year 1	Year 2	Year 3
Energy Charge:				
Block 1 (0 - 500 kWh)	\$ 0.07800	\$ 0.08549		
Block 2 (Excess)	\$ 0.05544	\$ 0.06839		
Non Summer On-Peak			\$ 0.08199	\$ 0.10147
Non Summer Off-Peak			\$ 0.06073	\$ 0.06150
Summer On-Peak			\$ 0.10000	\$ 0.12377
Summer Off-Peak			\$ 0.07408	\$ 0.07501
Demand Charge:				
Distribution Demand	\$ 11.60	\$ 12.10	\$ 12.60	\$ 13.10
Revenue from Rate	\$ 8,706	\$ 9,835	\$ 9,941	\$ 10,611
Change from Previous		13.0%	1.1%	6.7%
Non Summer Differential			1.35	1.65
Summer Differential			1.35	1.65

## Heber Light & Power

### Electric Rate Design

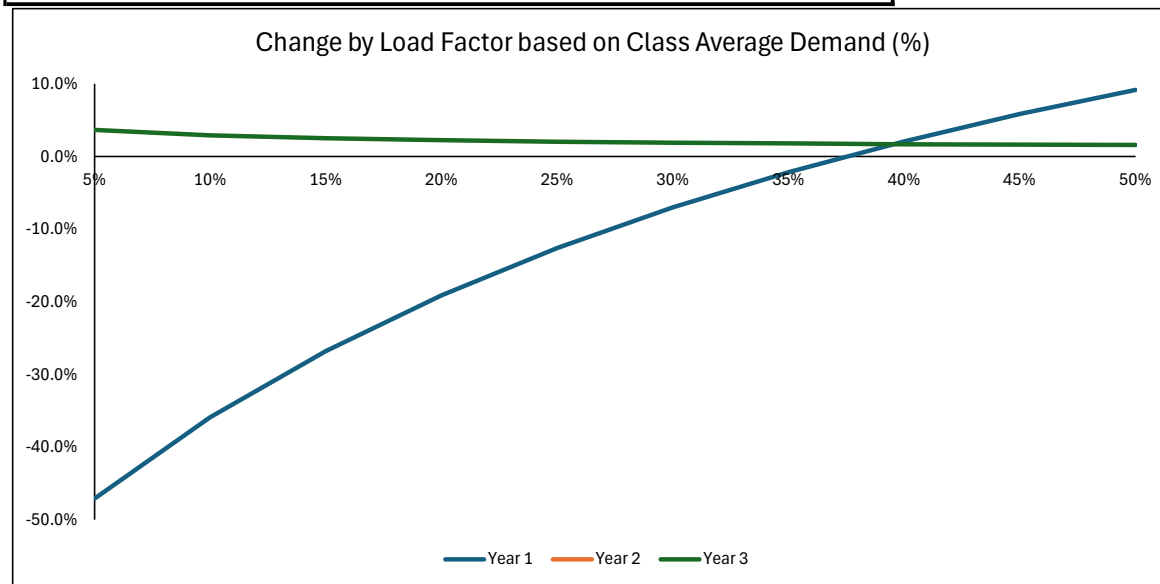
Yard Lighting

Rates	Current	Year 1	Year 2	Year 3
Monthly Base Charge:				
All Area Lights	\$ 8.25	\$ 9.30	\$ 9.65	\$ 10.00
Revenue from Rate	\$ 17,523	\$ 19,753	\$ 20,497	\$ 21,240
Change from Previous		12.7%	3.8%	3.6%



**Heber Light & Power**  
**Electric Rate Design**  
 Residential Service Pumping

Rates	Current	Year 1	Year 2	Year 3
<b>Monthly Facilities Charge:</b>				
All Customers	\$ 26.00	\$ 18.40	\$ 18.90	\$ 19.40
<b>Energy Charge:</b>				
Block 1 (0 - 1000 kWh)	0.06092	0.11820		
Block 2 (Excess)	0.06092	0.14130		
Non Summer On-Peak			\$ 0.14029	\$ 0.15652
Non Summer Off-Peak			\$ 0.12199	\$ 0.12040
Summer On-Peak			\$ 0.14029	\$ 0.15652
Summer Off-Peak			\$ 0.12199	\$ 0.12040
<b>Demand Charge:</b>				
Distribution Demand	\$ 9.85	\$ 0.25	\$ 0.50	\$ 0.75
Revenue from Rate	\$ 15,944	\$ 14,543	\$ 14,659	\$ 15,112
Change from Previous	15,944	-8.8%	0.8%	3.1%
Non Summer Differential			1.15	1.30
Summer Differential			1.15	1.30



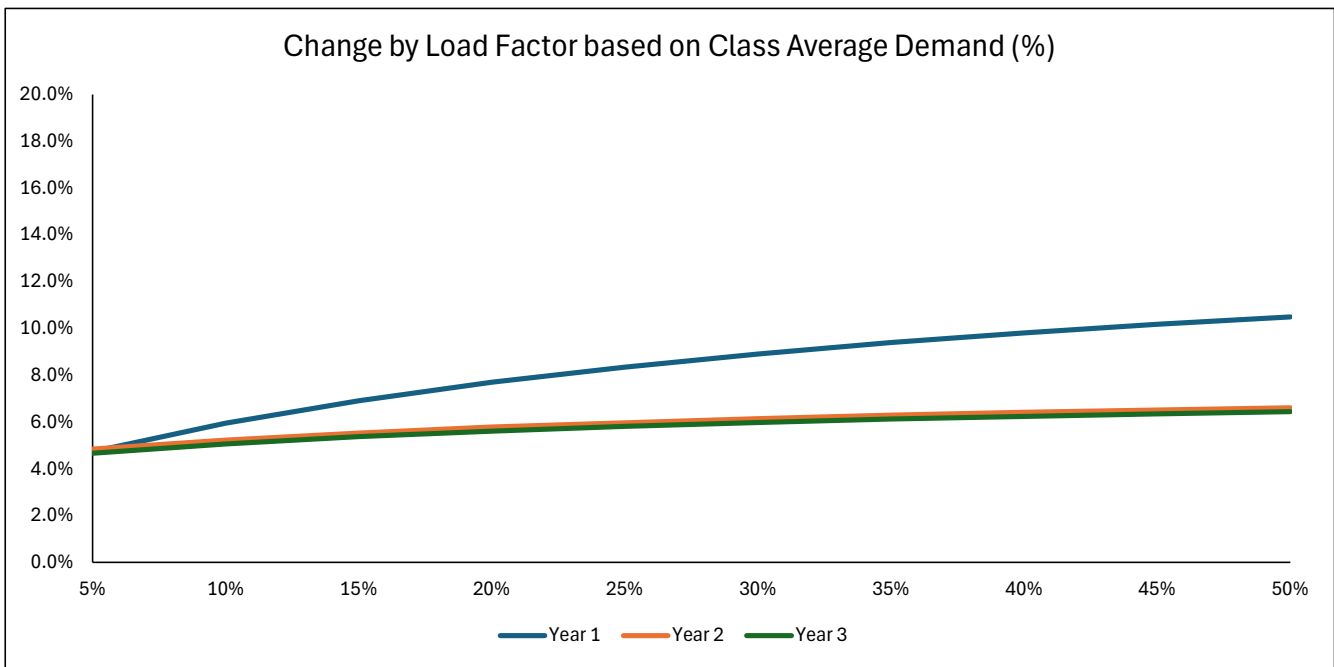
<b>Average Monthly \$ Change by Winter Load Factor</b>					
Winter Monthly Energy	LF	Year 1	Year 2	Year 3	
84	5%	\$ (25.66)	\$ 3.35	\$ 1.19	
167	10%	\$ (21.71)	\$ 5.64	\$ 1.31	
251	15%	\$ (17.76)	\$ 7.92	\$ 1.42	
335	20%	\$ (13.80)	\$ 10.20	\$ 1.54	
419	25%	\$ (9.85)	\$ 12.48	\$ 1.66	
502	30%	\$ (5.90)	\$ 14.76	\$ 1.77	
586	35%	\$ (1.94)	\$ 17.04	\$ 1.89	
670	40%	\$ 2.01	\$ 19.33	\$ 2.01	
753	45%	\$ 5.96	\$ 21.61	\$ 2.13	
837	50%	\$ 9.91	\$ 23.89	\$ 2.24	

# Heber Light & Power

## Electric Rate Design

Small General Service Pumping

Rates	Current	Year 1	Year 2	Year 3
<b>Monthly Facilities Charge:</b>				
All Customers	\$ 38.50	\$ 41.00	\$ 44.50	\$ 48.00
<b>Energy Charge:</b>				
All Energy	0.06092			
Non Summer On-Peak		\$ 0.11397	\$ 0.12314	\$ 0.13279
Non Summer Off-Peak		\$ 0.05698	\$ 0.06157	\$ 0.06639
Summer On-Peak		\$ 0.13901	\$ 0.15019	\$ 0.16197
Summer Off-Peak		\$ 0.06950	\$ 0.07510	\$ 0.08098
<b>Demand Charge:</b>				
Distribution Demand	\$ 9.85	\$ 9.85	\$ 9.85	\$ 9.85
Revenue from Rate	\$ 93,317	\$ 105,588	\$ 112,063	\$ 118,755
Change from Previous		13.1%	6.1%	6.0%
Non Summer Differential		2.00	2.00	2.00
Summer Differential		2.00	2.00	2.00

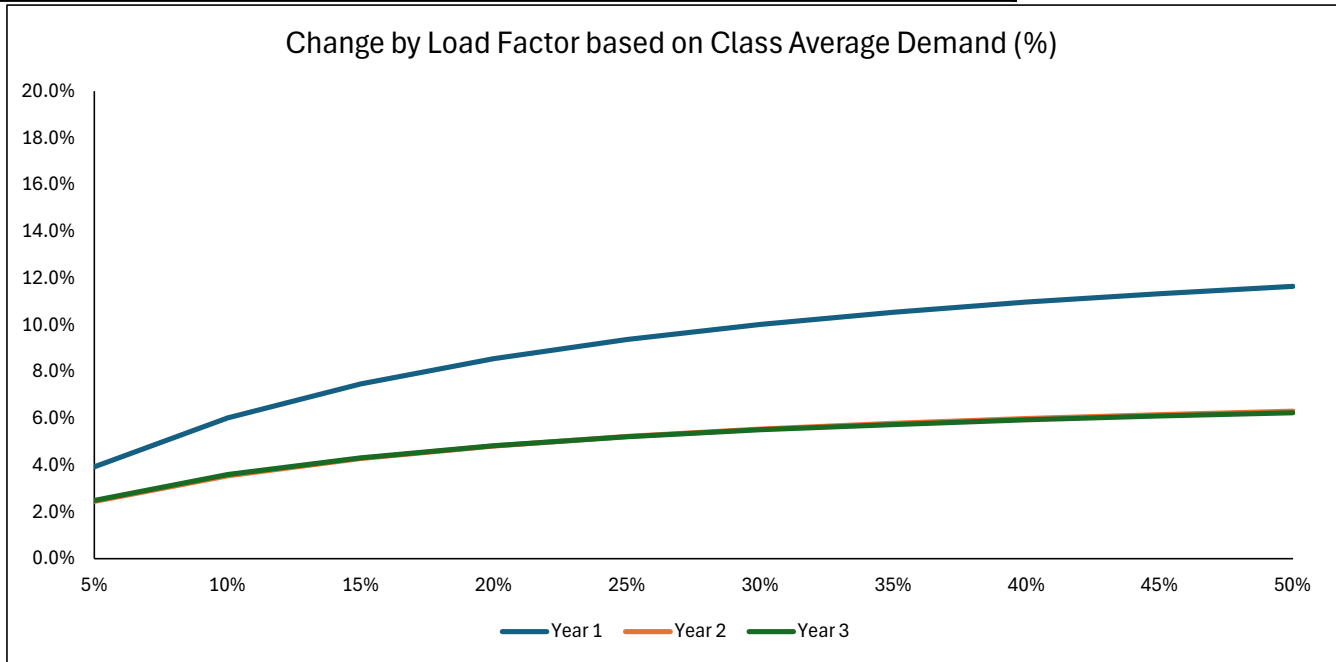


# Heber Light & Power

## Electric Rate Design

Medium General Service Pumping

Rates	Current	Year 1	Year 2	Year 3
<b>Monthly Facilities Charge:</b>				
All Customers	\$ 145.00	\$ 150.00	\$ 155.00	\$ 160.00
<b>Energy Charge:</b>				
All Energy	0.06092			
Non Summer On-Peak		\$ 0.11397	\$ 0.12314	\$ 0.13279
Non Summer Off-Peak		\$ 0.05698	\$ 0.06157	\$ 0.06639
Summer On-Peak		\$ 0.13901	\$ 0.15019	\$ 0.16197
Summer Off-Peak		\$ 0.06950	\$ 0.07510	\$ 0.08098
<b>Demand Charge:</b>				
Distribution Demand	\$ 9.85	\$ 9.85	\$ 9.85	\$ 9.85
Revenue from Rate	\$ 267,899	\$ 306,745	\$ 322,082	\$ 338,186
Change from Previous		14.5%	5.0%	5.0%
Non Summer Differential		2.00	2.00	2.00
Summer Differential		2.00	2.00	2.00

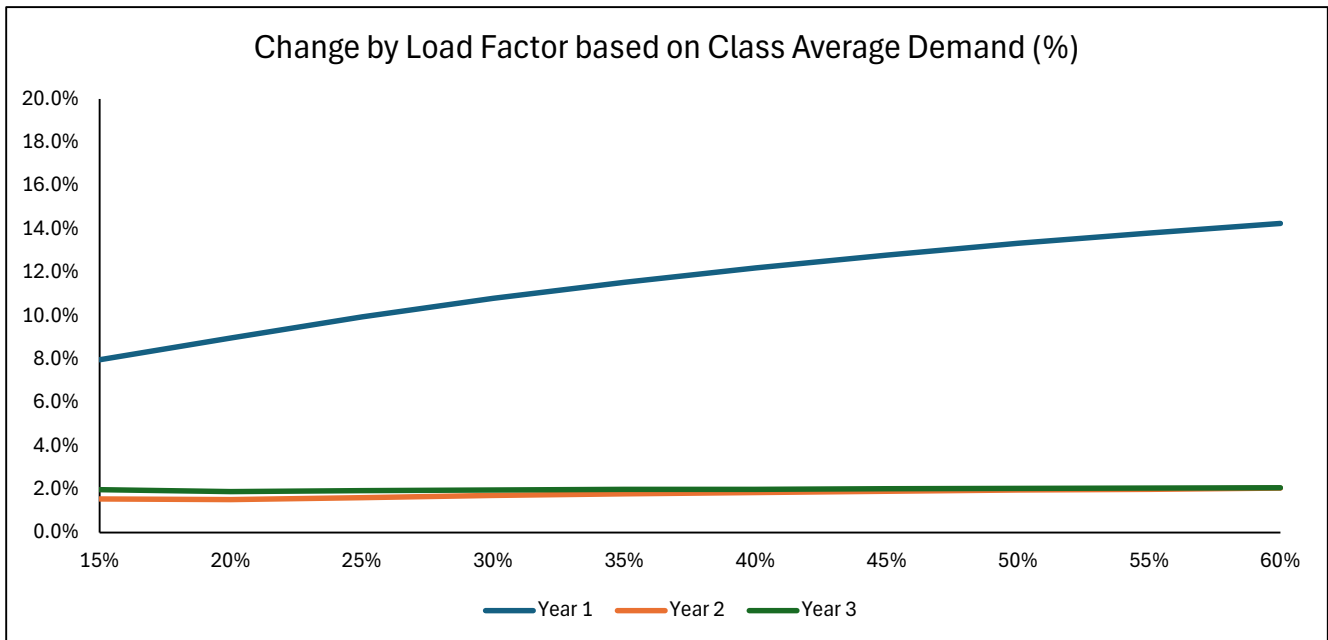


# Heber Light & Power

## Electric Rate Design

Small General Service

Rates	Current	Year 1	Year 2	Year 3
<b>Monthly Base Charge:</b>				
Single Phase	\$ 23.00	\$ 26.00	\$ 29.00	\$ 32.00
Three Phase	\$ 31.00	\$ 35.00	\$ 39.00	\$ 43.00
<b>Energy Charge:</b>				
Block 1 (0 - 500 kWh)	\$ 0.07800	\$ 0.08549	\$ 0.07815	\$ 0.07198
Block 2 (Excess)	\$ 0.05544	\$ 0.06839	\$ 0.07034	\$ 0.07198
<b>Demand Charge</b>				
All Demand	\$ 11.60	\$ 12.10	\$ 12.60	\$ 13.10
Revenue from Rate	\$ 3,379,842	\$ 3,785,423	\$ 3,898,986	\$ 4,015,955
Change from Previous		12.0%	3.0%	3.0%

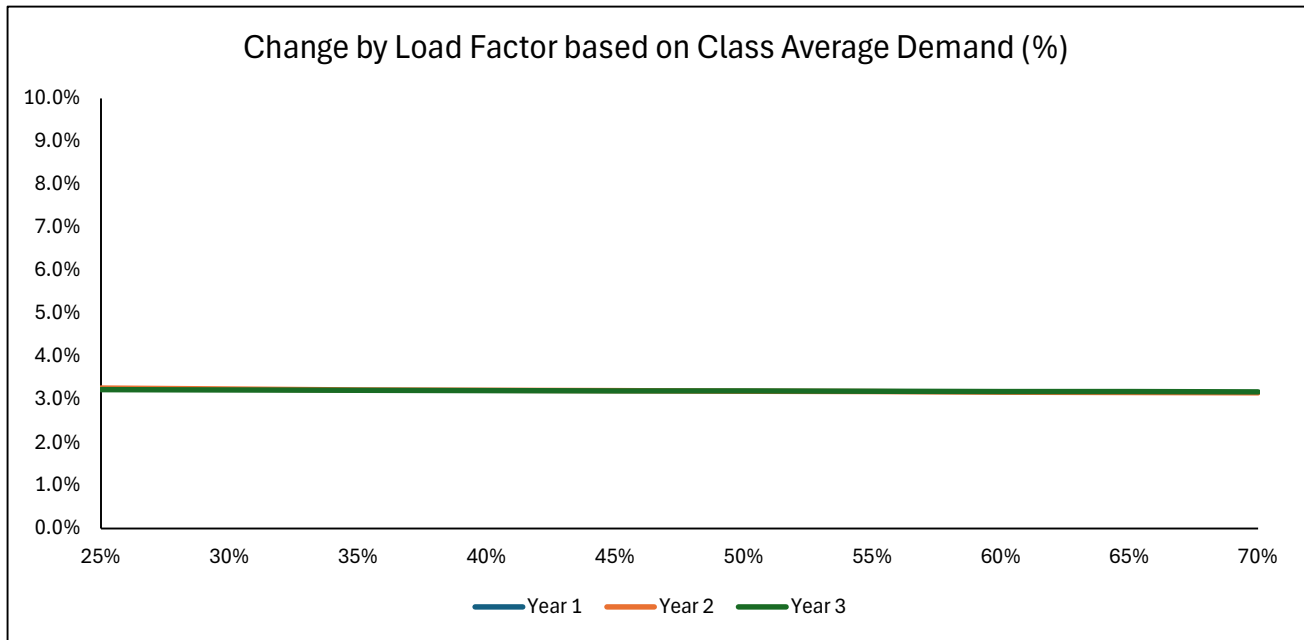


# Heber Light & Power

## Electric Rate Design

Medium General Service

Rates	Current	Year 1	Year 2	Year 3
Monthly Base Charge:				
All Customers	\$ 145.00	\$ 150.00	\$ 155.00	\$ 160.00
Energy Charge:				
All Energy	\$ 0.05662	\$ 0.06841	\$ 0.07048	\$ 0.07266
Demand Charge				
All Demand	\$ 13.95	\$ 14.45	\$ 14.95	\$ 15.45
Revenue from Rate	\$ 3,746,011	\$ 4,225,500	\$ 4,360,716	\$ 4,500,259
Change from Previous		12.8%	3.2%	3.2%



**Heber Light & Power**  
**Electric Rate Design**  
 LGS with TOU

Rates	Current	Year 1	Year 2	Year 3
<b>Monthly Facilities Charge:</b>				
All Customers	\$ 342.00	\$ 357.00	\$ 372.00	\$ 387.00
<b>Energy Charge:</b>				
All Energy	0.05289	0.06541		
Non Summer On-Peak			\$ 0.08199	\$ 0.10147
Non Summer Off-Peak			\$ 0.06073	\$ 0.06150
Summer On-Peak			\$ 0.10000	\$ 0.12377
Summer Off-Peak			\$ 0.07408	\$ 0.07501
<b>Demand Charge:</b>				
All Demand	\$ 15.10	\$ 15.35	\$ 15.35	\$ 15.35
Revenue from Rate	\$ 2,207,807	\$ 2,516,900	\$ 2,630,160	\$ 2,748,517
Change from Previous		14.0%	4.5%	4.5%
Non Summer Differential			1.35	1.65
Summer Differential			1.35	1.65

